

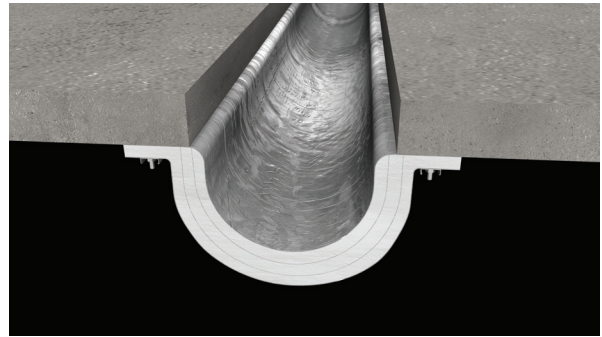


A CSW Industrials Company

## TECHNICAL DATA

# MetaFlex® Pro Undermount

Floor Expansion Joint Fire Barrier  
07 95 00



### PRODUCT DESCRIPTION

High performance single package, under-slab mounted floor fire barrier.

### IDEAL FOR

- Applications where a fire rated floor cover is required
- Applications where access to the top of slab is inaccessible

### ADVANTAGES

- Single package provides full 2 hour rating
- Installs from bottom of slab when top of joint is not accessible
- Factory fabricated male and female ends for quick splicing
- No caulk required at joint edges

### LIMITATIONS

- Provided in 5-0" (1524mm) maximum lengths

### RELATED PRODUCTS

- MetaFlex® Pro Floor Fire Barrier
- MetaFlex® Pro Shear Floor Fire Barrier

### PERFORMANCE

#### Joint Sizes

8" - 36" (203mm - 914mm) Maximum Opening

#### Movement Capabilities:

Permits unrestrained movement of the joint without disengagement of the fire barrier.



Expansion/contraction



Vertical shear

Contact factory for details



Per ASTM E1399

**Meets IBC 715.3** fire test criteria for fire-resistant joint system

**Meets IBC 715.6** requirements for fire-resistant joint systems in smoke partitions and smoke barriers

**2 hour fire resistance rating** per UL 2079 & ASTM E1966

**<2 SCFM/LF Air Leakage** L-Rating per UL 2079

**Meets CAN/ULC-S115** standards for fire resistant joint systems.

# METAFLEX® PRO UNDERMOUNT FLOOR EXPANSION JOINT FIRE BARRIER

---

## ADDITIONAL DOCUMENTATION

- Product details
- Installation instructions
- ASTM E1399
- Warranty
- SDS documentation
- LEED documentation

## WARRANTY

Standard Warranty: 5 years

*Sample warranty available upon request*