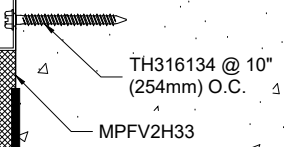
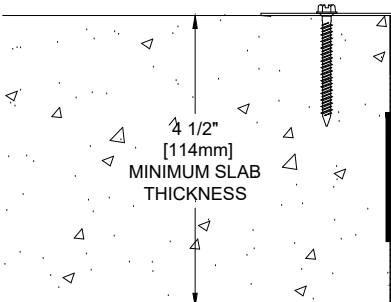


**MPFV2H33**  
 FLOOR FIRE BARRIER  
 2 HOUR RATED  
 MAXIMUM OPENING 33" (838mm)  
 INTERTEK LISTING # BA/EC 120-01

COVER IS REQUIRED TO MAINTAIN  
 2 HOUR RATING (BY OTHERS)  
 SEE NOTE



1'-10"  
 [559mm]

**NOTE:**  
 THE FIRE RATING FOR THIS AND SIMILAR  
 CONDITIONS IS DETERMINED NOT ONLY  
 BY THE METAFLEX® FIRE BARRIER BUT  
 ALSO THE PERFORMANCE CAPABILITIES  
 OF THE SURROUNDING CONSTRUCTION.

**COVER PLATE OPTIONS:**  
 1/8" STAINLESS STEEL  
 1/8" GALVANIZED STEEL  
 3/16" ALUMINUM ALLOY  
 2 mil STAINLESS STEEL FOIL (CHASE  
 CONDITION)

Project:	
Customer:	
SO#	
Date:	
Page ___ of ___	Scale: NTS

Length	Qty.	Color

Drawn By: DEB



A CSW Industrials Company

The information contained herein is the proprietary property  
 of BALCO®. No portion of it may be reproduced by any means or  
 used in any form except for the purpose for which it was furnished.  
 All rights of design and invention are hereby reserved.

REV. - 07/14/20